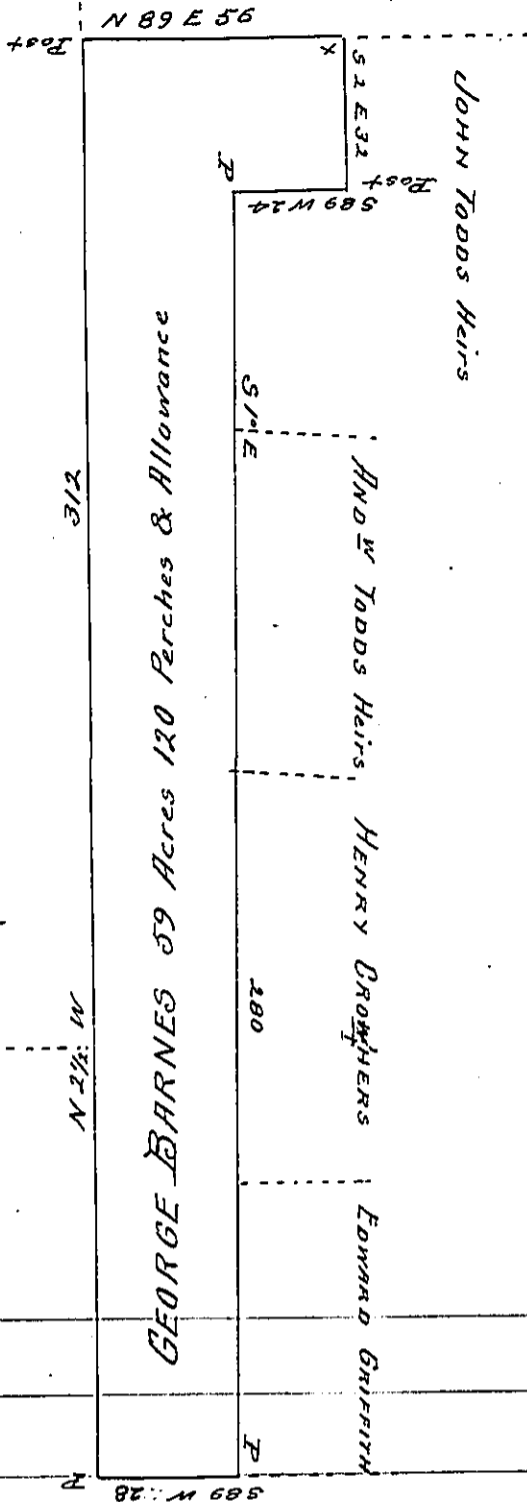


Luke Crawford's Heirs



No 477 of 200 Acres 3rd Donation District

No 478 of 200 Acres

JOHN M. KERR

Situate in Findley Township Mercer County on the waters of Neshanock Creek
 Containing fifty nine Acres and one hundred and twenty perches and allo-
 wance of Six per cent for Roads & C^o Surveyed for George Barnes Dece-
 mber 22nd 1849 in pursuance of of Actual settlement and Residence
 on the same surveyed by me

John Findley D.S.

To John Laporte Esq.
 Surveyor General

IN TESTIMONY that the above is a copy of the original remaining on file in
 the Department of Internal Affairs of Pennsylvania, made
 conformably to an Act of Assembly approved the 16th day of
 February, 1833, I have hereunto set my Hand and caused
 the Seal of said Department to be affixed at Harrisburg,
 this twenty-eighth day of March 1904

Joseph B. Brown
 Secretary of Internal Affairs.